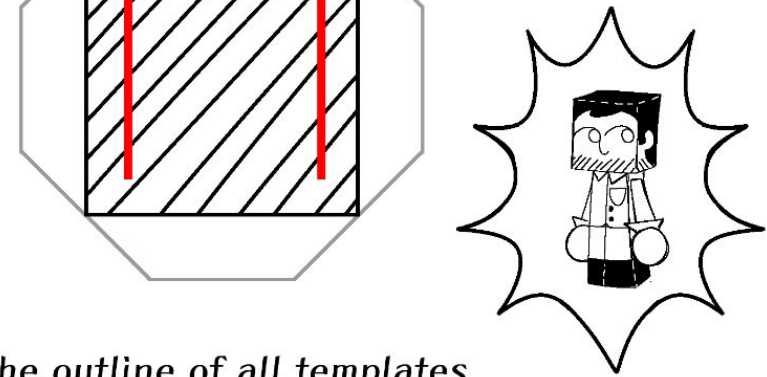
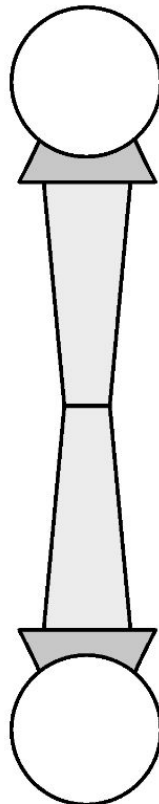
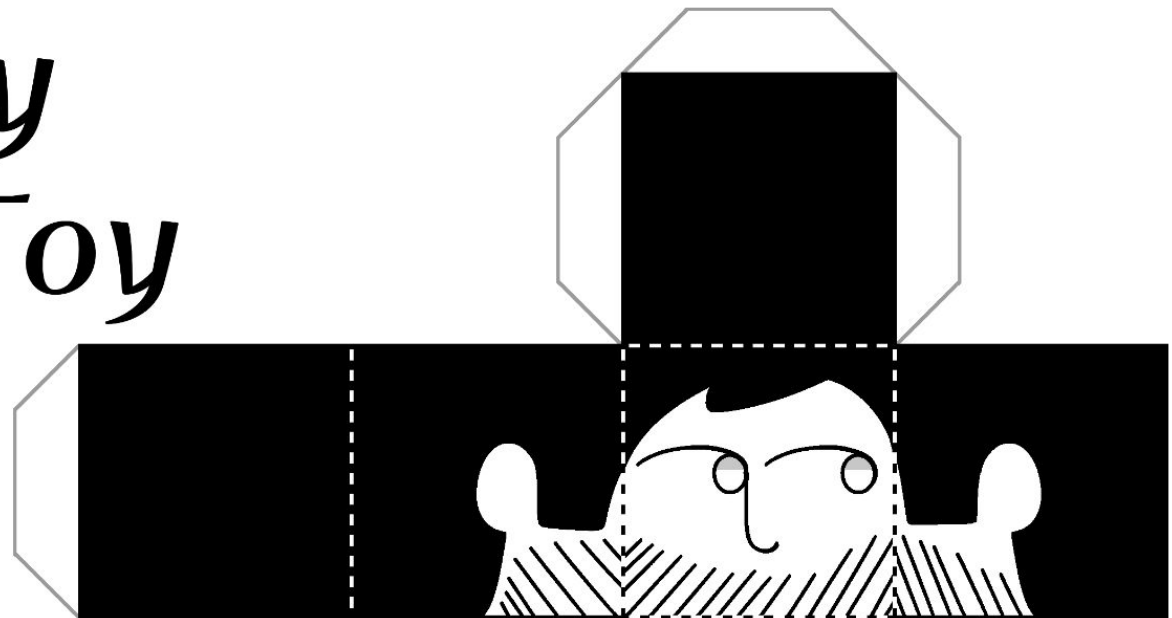
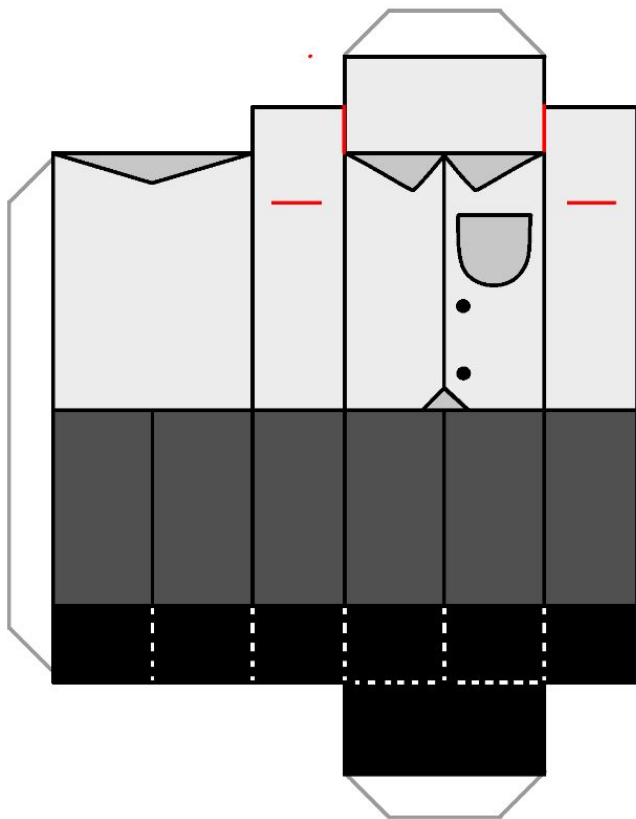


Mr. Cantey Flatpack Toy

Mr. Cantey is a Trimble Tech teacher that works in the Animation department, he's knowledgeable in Adobe Products and is always open to give help regarding animation technicalities



STEPS

1. Cut along the outline of all templates
2. Make incisions along any red lines
3. Fold along any full and dotted lines
4. As you assemble glue tabs inside the figure to stay secure
5. Cut the arms to have them separate
6. Insert arms into the body box
7. Using the extended body paper insert it into the bottom slits of the head